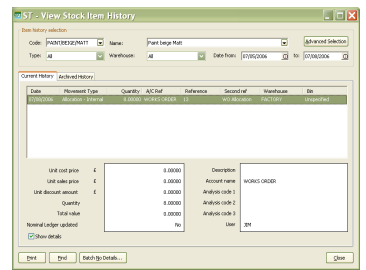
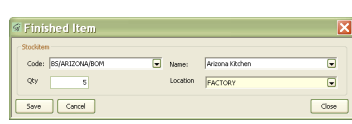
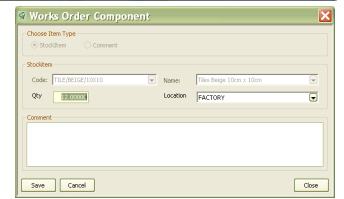
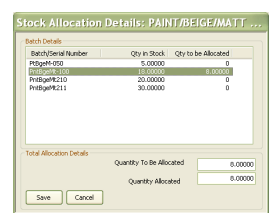
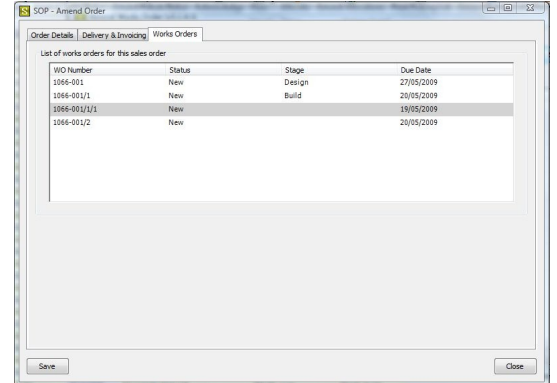
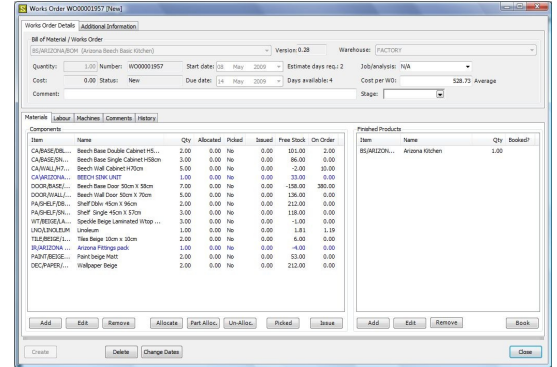
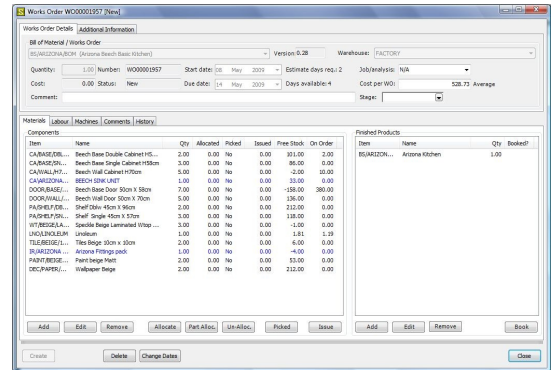


Works Order Processing for Sage 200

Product Overview

WOP is a Sage 200 module, integrated with BOM & Stock Control. It provides increased functionality to the Sage 200 BOM module and is an ideal addition for clients in manufacturing who need a simplified stock management process.

- Fully integrated with Sage 200 modules**
 - references the standard Sage 200 BOM module
 - allocated and issues stock with full traceability functionality
 - make finished item (or items) or simply book components to a job*
 - complies with Sage BOM version control
- Enhanced functionality**
 - amend a Works Order as many times as you like
 - add and remove items on a Works Order at any time
 - allocate stock at individual line level
 - issues stock at individual line level
 - over-runs can be booked to stock without the need to add more components
 - no additional 'confirm batches' at issue, increasing speed and ease of use
 - quality data, test results and notes can be recorded against each batch
- Works Order Costing**
 - uses component costing method for accurate cost roll-up
 - new BOM 'cost roll up' enquiry available
- Multi Level Works Order**
 - explode more than one level of a BOM into a Works Order
- Easy to learn and use**
 - screens and processes are designed for non-IT & non-manufacturing users
 - Works Orders are quick and simple to setup
 - most data input is simple and logical
- Works Order stock shortages**
 - outstanding stock allocations at line level result in a shortage
 - at goods received a new enquiry is available, WOP shortages, for components.
- Stock History**
 - track WOP issues & bookings easily in stock transaction history
- A full set of amendable reports are included**
 - reports are designed in the Sage report designer and are all amendable
 - Works Order Picking list and transaction reports are included
- Integration with other modules**
 - Create Works Orders directly for a Sales order and view progress and status from the Sales Order for all linked Works Orders
 - Works Orders can be created and components booked to a Job
- Runs with Multiple Sage Companies**
 - can be used on multiple Sage companies at no additional cost
- System Requirements**
 - WOP runs as an additional Sage 200 module so has no additional requirements



To find out more about this product contact your Sage Business Partner