



Increases in the Standard Rate of VAT for UK from January 1st 2010.

From 1 January 2010, the standard rate of VAT will increase from 15% to 17.5%. This rate applies to the supply of goods and services including:

- **Motor vehicles**
- **Petrol**
- **Furniture**
- **Carpets**
- **Adult footwear**
- **Clothing**
- **Accountancy and solicitor services**

Note: Unaffected by the VAT rate change are the following:

- **Zero-rated goods, for example, basic foodstuffs, children's clothing and children's foot wear.**
- **Goods and services subject to VAT at the reduced rate of 5%**

The purpose of this guide is designed to show you how to change your VAT information in your sage system to reflect the latest government legislation.

Which VAT rate should I use?

The rate that should be charged on your goods and services depends on:

- The VAT scheme you are using
- The VAT status of the customer you are supplying

To determine which VAT rate should be applied, refer to the guidance document published on the HMRC Web site: <http://www.hmrc.gov.uk>

Note: OMS/Innov8 are unable to advise which VAT rate is applicable in specific circumstances. Any such queries must be directed to the HMRC. Please visit <http://www.hmrc.gov.uk> and click on 'Contact Us' to find the contact for your area.

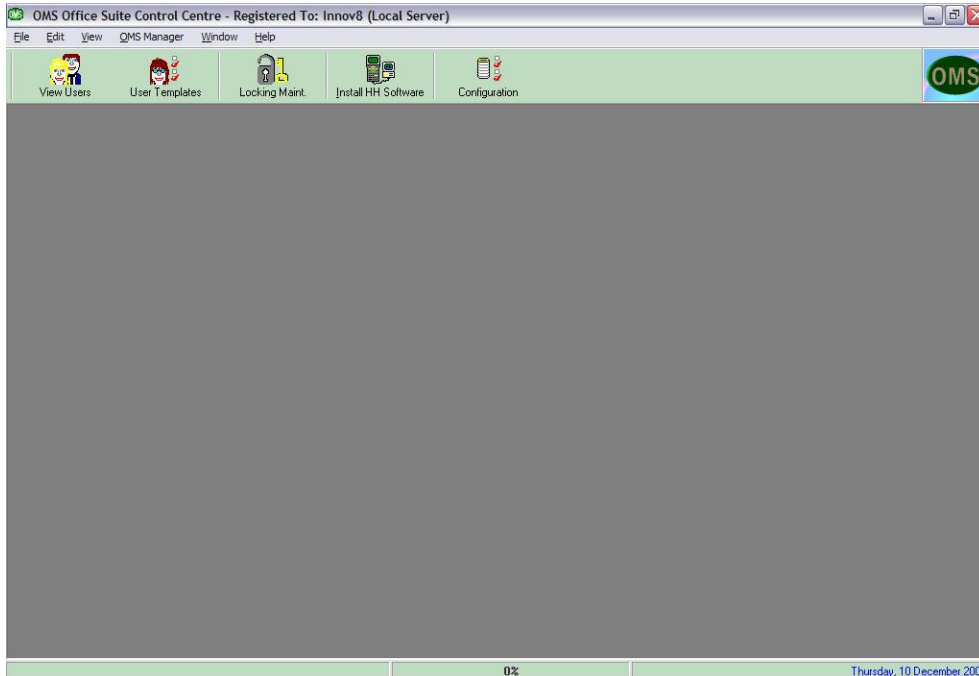
IMPORTANT:

OMS USERS MUST UPDATE THEIR SAGE VAT SETTINGS PRIOR TO UNDERTAKING THIS UPDATE.



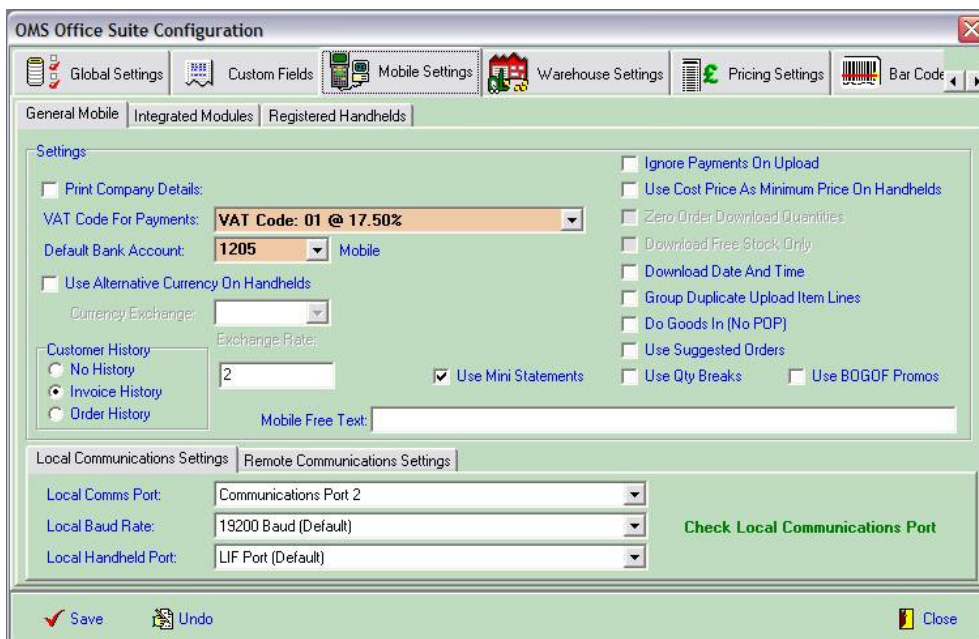
On your OMS Office Suite Application. Open your OMS office suite application

Run the OMS office suite from your desktop, and log in as manager.



Go to File > Re-Update from Sage 50.

Then click on 'Configuration' on the top bar and you will be confronted with the following:



Click on the mobile Settings Tab > General Mobile and you will see, as above a drop down box which will allow you to select the VAT rate. Change this to 17.5% and click Save.



You should see a page as below to confirm you have updated this:



At this point you must download your handsets for this to take effect.

Should be factually correct however OMS/Inno8 cannot be held responsible for any issues arising from its incorrect usage. If you have any issues with any of these processes or would like help regarding changes to your VAT within your system please call our support line on: **0161 975 1666**.